



EASTSIDE AERIALS

BODYCAM NORDIC SPORTS

BODYCAM

The development of our camera system from the athletes' perspective ensures a much more intense viewing experience: true to the motto "right in the thick of it, instead of just watching," viewers experience the race from the athletes' perspective.

HARDFACTS

type	gimbal camera with clip-on / chest strap
weight	300g (camera, radio link, battery) + 100g chest strap
dimensions (diagonal)	11.5 x 9.5 x 9.5 cm
battery life	20-60 min (depending on battery size)
maximum range	video: 1-2km (open field) / 0.2-0.5km obstructed; Control 2-3km
gimbal	3-axis, brushless
camera	4K 1/1.3-inch CMOS sensor
optics	approx. 120° FOV 12mm equivalent (FOV digitally adjustable)
format	1080i50, 1080p50



RCP (DOP / OB van)	via video radio link
video frequency	5.8 GHz
gps	optional
communication	wireless intercom (team) includes 4-wire connection to OB van



NORDIC SPORTS

Just as important as the athletes' perspective are graphics and data that create an even more immersive experience. In addition to race-related data, such as distances to pursuers or leaders, the athletes' vital signs are also included. These core elements are clearly brought together in the graphics provided, creating a unique combination of emotion, transparency, and performance insights.

PERSPECTIVE OF THE PURSUING ATHLETE



Distance to the pursued.

Athlete image and “Athletes View” overlay indicate whose perspective the race is being shown from.

PERSPECTIVE OF THE ATHLETE BEING PURSUED



Lead / Gap to the pursuer.

Athlete image and “Athletes View” display indicate whose perspective the race is being shown from.

VIEW OF THE PURSUED ATHLETE WITH POSITION IN THE RACE



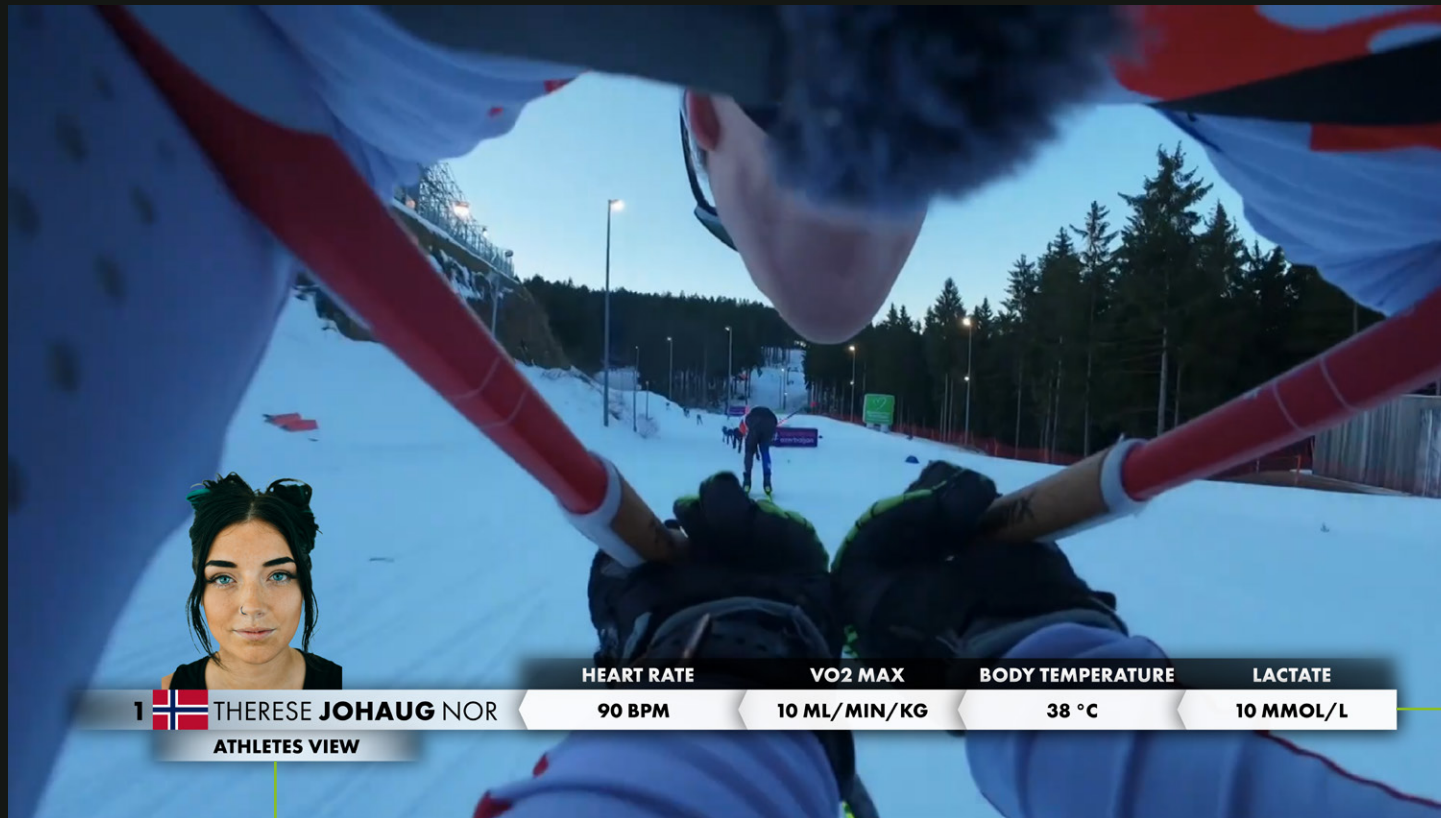
Bodycam with reference, optionally for pursuer/pursued.

In addition to the familiar display, the pursuer/pursued is identified by a display.

Route profile and positioning of bodycam runner and pursuer/pursued visualized on route.

ATHLETE'S PERSPECTIVE WITH VITAL DATA

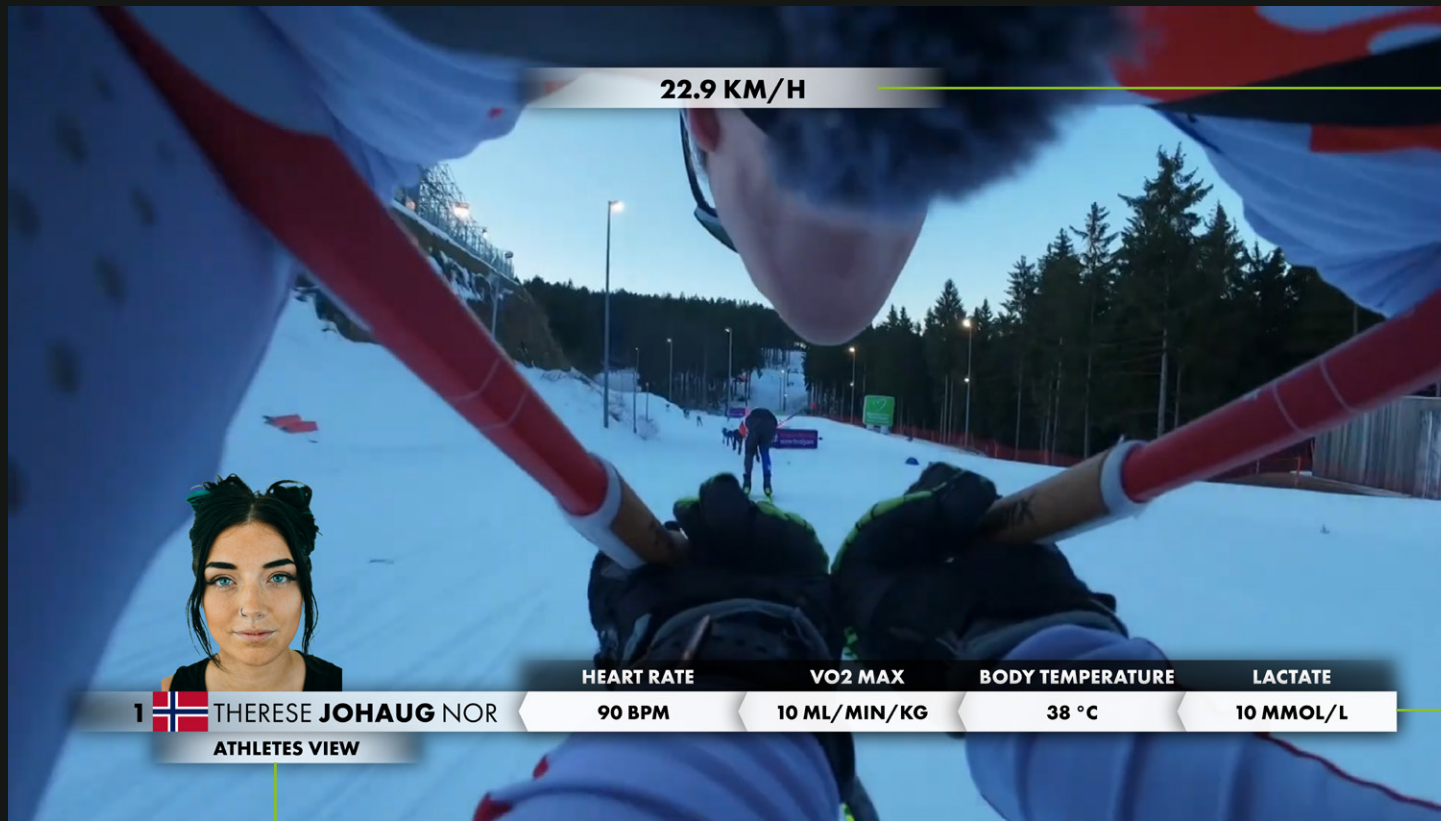
The combination of the athlete's perspective and vital data gives commentators a new level of insight into race tactics and progress.



The name and picture indicate whose perspective the race is being shown from.

Display of vital signs provides information about the athlete's condition.

ATHLETE'S PERSPECTIVE WITH VITAL DATA AND SPEED



Displaying the speed provides additional information at key points.

Display of vital signs provides information about the athlete's condition.

The name and picture indicate whose perspective the race is being shown from.

ATHLETE'S PERSPECTIVE WITH VITAL DATA, SPEED, AND POSITION IN THE RACE

The combination of the athlete's perspective and vital data gives commentators a new level of insight into race tactics and progress.



The name and picture indicate whose perspective the race is being shown from.

Display of vital signs provides information about the athlete's condition.

Displaying the speed provides additional information at key points.

Can be combined with route profile and position.

BODYCAM DEMO



EASTSIDE AERIALS

a brand of
J&J Mediengesellschaft mbH

Auerbacher Str. 152
08248 Klingenthal
Germany

info@eastsideaerials.de
+49 3741 281 877-60

FOLLOW US

Instagram

TikTok

Linkedin

YouTube